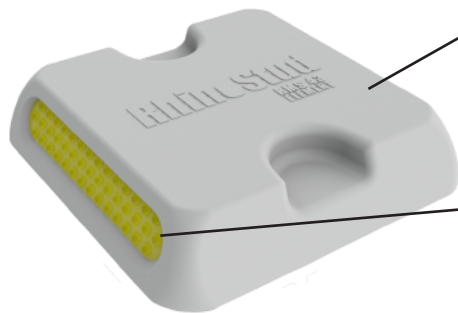


RhinoStud™

RMS 43 ELEMENT

the future of reflective road studs

RhinoStud™ is the first Reflective Road Stud to offer Africa's road designers and road builders the strength and durability of metal embodiment with the flexibility and cost effectiveness of injection moulding. With its superior strength, unique patented design, unsurpassed reflective performance and the flexibility to be custom manufactured to specific customer requirements at short notice, RhinoStud is an African road stud custom designed and developed for Africa's harsh conditions.

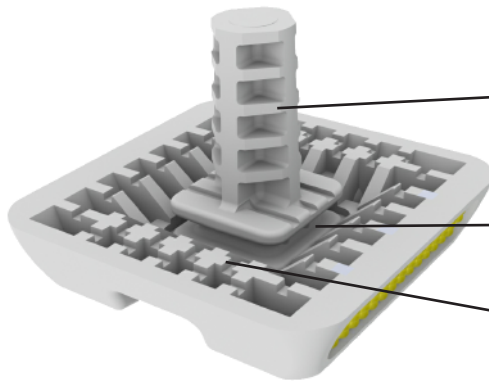


Glass fibre reinforced, metal replacement polymer body is as tough and durable as steel. It has no scrap value and is therefore less prone to pilfering than similar products that are made with a steel or aluminium construction.

SWAREFLEX®
lights the way to safety

43 Beaded Swareflex lenses provide maximum reflectivity. The lens is recessed into the body to reduce the risk of tyre impact.

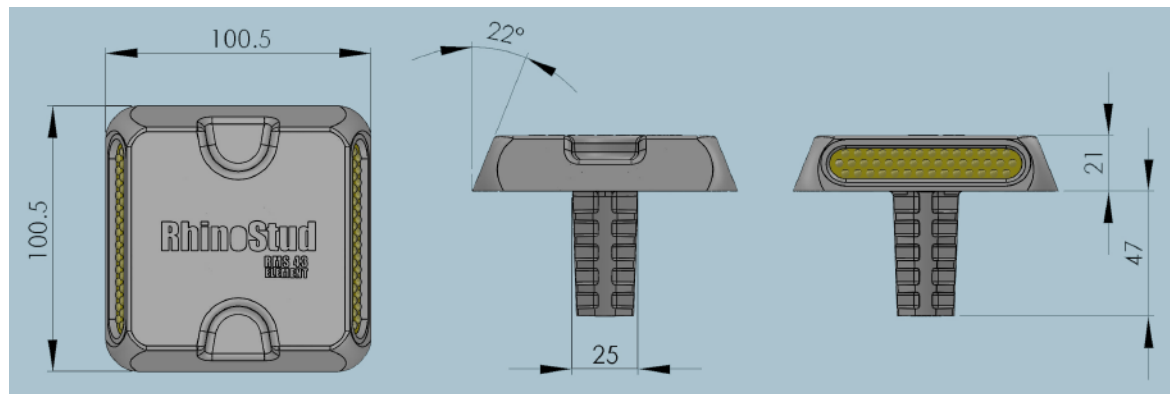
Unique, patented construction ensures that the lens can never be dislodged from the body. There is no glue that can perish or welding process that can be flawed.



Horizontal ribs ensure that the stud cannot be pulled out of epoxy and vertical ribs ensure that the stud cannot twist.

Large undercut area ensures that the stud cannot be pulled out of epoxy.

Ribs and cavities increase surface area and thereby improve epoxy adhesion as well as ensuring that the stud cannot twist.



Embodiment: Ultra-Flow glass reinforced Metal-replacement Polymer
Reflectivity: Swareflex Glass crystal inserts 43 beads per side
Dimensions: 100 mm x 100 mm
Weight: 190 grams
Availability: Manufactured in South Africa

Colours Embodiment: White, Yellow, Red & Black
Colours Reflectors: White, Yellow & Red
UV Resistance: 180 (kLy)

Tensile Strength at Break: 230 Mpa (33.3)
Tensile Modulus: 16.500 Mpa (2.390)
Tensile Strain at Break: 2.5%
Flexural Modulus: 14,000 Mpa (2.030)
Charpy Notched Impact Strength: 15 KJ/m² (2.3)

Glass Crystals: EN 1463-1 Type P1A fulfilled

Standards: EN 1463, BS 873/Part 4, CE

RhinoStud is manufactured in South Africa thereby ensuring rapid delivery to your project site. RhinoStud conforms to EU, SABS1442 and SADC Road Standards offering the durability of metal fabricated road studs.

For more information about RhinoStud or if you would like a free sample or details about existing RhinoStud installations and test sites please contact:

Noel vd Westhuizen
GODUSA cc t/a Rhinostud
P O Box 715
GILLITTS - KZN
3603



Phone: +27 (0)31-765-1628
Fax: +27 (0)86-530-1894
Cell No: +27 (0)83-661-5285
email: ncon@absamail.co.za